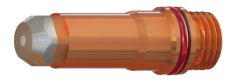
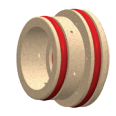
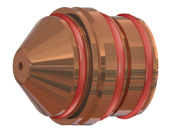
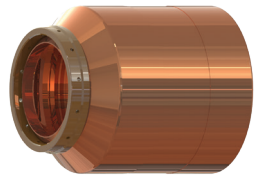
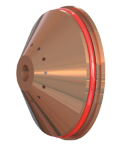
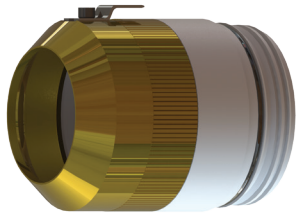


260A MILD STEEL - O₂ PLASMA / AIR SHIELD

Plasma gas inlet:
120psi/8.4bar
Shield gas inlet:
120PSI/8.4bar



Shield Cap
60-0398

Shield
60-0440

Nozzle Retaining Cap
60-0433

Nozzle
60-0439

Swirl Ring
60-0436

Electrode
60-0668

Water Tube
60-0340

ENGLISH

Thickness Inches	Prewlow		Cutflow		Arc Voltage AV	Torch-to-Work Inches	Cutting Speed Inches/Minute	Initial Pierce Height		Pierce Delay Sec		
	O ₂ Plasma	Air Shield	O ₂ Plasma	Air Shield				In	Factor %			
1/4	22	49	76	46	150	.011	245	0.33	300	0.3		
5/16							215					
3/8							180					
1/2							145					
5/8			80	49	80	49	155	0.14	115	0.35	250	0.5
3/4									90			0.6
7/8									75			0.7
1									65			0.8
1-1/8			84	49	84	49	170	0.19	55	0.38	200	0.9
1-1/4									45			1.0
1-1/2									35			Edge Start
1-3/4									22			
2					188		15					

† American Torch Tip Company is in no way affiliated with the above-named manufacturer(s). References to the above-named machines, torches and numbers are for your convenience only. American Torch Tip is not necessarily authorized by the above-named manufacturer(s) to provide replacement parts. Most parts advertised for sale are made by, or for, American Torch Tip Company and other parts, as indicated, are original parts manufactured by the above-named OEM and are simply being resold by American Torch Tip Company. Part numbers followed by an * are manufactured by the respective OEM.

60-9951

METRIC

Thickness mm	Preflow		Cutflow		Arc Voltage AV	Torch-to-Work mm	Cutting Speed mm/Minute	Initial Pierce Height		Pierce Delay Sec			
	O2 Plasma	Air Shield	O2 Plasma	Air Shield				mm	Factor %				
6	22	49	76	46	150	2.8	6500	8.5	300	0.3			
8							5470						
10							4440						
12							3850						
15			80	49			3.6	155	9.0	250	0.5		
20								159			2170	0.6	
22								166			1930	0.7	
25			84	49			4.8	171	9.5	200	0.8		
28								170			1445	0.9	
32								172			1135	1.0	
38								174			895	Edge Start	
44								185			580		
50								188			405		

† American Torch Tip Company is in no way affiliated with the above-named manufacturer(s). References to the above-named machines, torches and numbers are for your convenience only. American Torch Tip is not necessarily authorized by the above-named manufacturer(s) to provide replacement parts. Most parts advertised for sale are made by, or for, American Torch Tip Company and other parts, as indicated, are original parts manufactured by the above-named OEM and are simply being resold by American Torch Tip Company. Part numbers followed by an * are manufactured by the respective OEM.