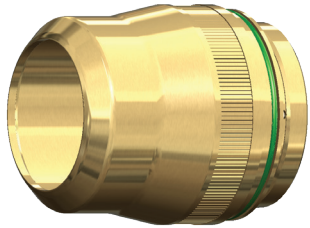


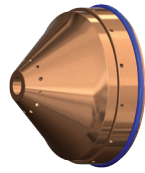
For Lincoln® (Kaliburn®) Systems

## 275A MILD STEEL - O<sub>2</sub> PLASMA / AIR SHIELD

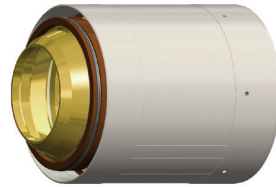
Plasma gas inlet:  
120psi/8.4bar  
Shield gas inlet:  
120PSI/8.4bar



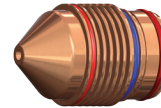
**Shield Cap**  
97-0200



**Shield**  
97-0491



**Nozzle Retaining Cap**  
97-0365



**Nozzle**  
97-0279



**Swirl Ring**  
90-0436



**Electrode**  
97-0276



**Water Tube**  
90-0571

ENGLISH

| Material Thickness | Preflow (psi) | Plasma (psi) | Shield (psi) | Postflow (psi) | Arc Voltage | Travel Speed (ipm) | Cutting Height | Pierce Height | Pierce Time (msec) | Kerf Width |
|--------------------|---------------|--------------|--------------|----------------|-------------|--------------------|----------------|---------------|--------------------|------------|
| 1/2                | 20            | 81           | 70           | 79             | 150         | 125                | .140           | .300          | 500                | 0.119      |
| 5/8                |               |              |              |                | 155         | 105                | .135           | .325          | 600                | 0.125      |
| 3/4                |               |              |              |                | 159         | 90                 | .120           | .350          | 800                | 0.132      |
| 1                  |               |              |              |                | 171         | 65                 | .160           | .400          | 1000               | 0.146      |
| 1-1/4              |               |              |              |                | 172         | 45                 | .175           | .500          | 1500               | 0.161      |
| 1-1/2              |               |              |              |                | 174         | 25                 | .235           | .750          | 2000               | 0.176      |
| 1-3/4              |               |              |              |                | 185         | 20                 | .290           | .350          | 1500               | 0.192      |
| 2*                 |               |              |              |                | 188         | 15                 | .350           |               |                    | 0.210      |
| 2-1/4*             |               |              |              |                | 195         | 13                 | .375           |               |                    | 0.227      |
| 2-1/2*             |               |              |              |                | 202         | 9                  | .385           |               |                    | 0.246      |

\* = Edge start required.

† American Torch Tip Company is in no way affiliated with the above-named manufacturer(s). References to the above-named machines, torches and numbers are for your convenience only. American Torch Tip is not necessarily authorized by the above-named manufacturer(s) to provide replacement parts. Most parts advertised for sale are made by, or for, American Torch Tip Company and other parts, as indicated, are original parts manufactured by the above-named OEM and are simply being resold by American Torch Tip Company. Part numbers followed by an \* are manufactured by the respective OEM.

For Lincoln®  
(Kaliburn®) Systems  
#90-275-L  
#90-275-R